



## Product Data Sheet:

### R-E-D NSP-112 Colloidal Silica Powder

**R-E-D NSP-112 Colloidal Silica Powder** is an amorphous silica powder low in Na & Fe.

- ✓ The primary particles are 5-20 nanometers in size
- ✓ The average particle size is 20-25 microns
- ✓ These particles are easily deagglomerated to the low micron range
- ✓ There are no residual salts

#### Application: Dry Mixes & Blends

- Underground
- Underwater Concreting
- Repair & Rehabilitation
- Specialty
- Self-Consolidating
- Rapid Set
- High Performance Concrete
- Mortar & Grout

#### Packaging:

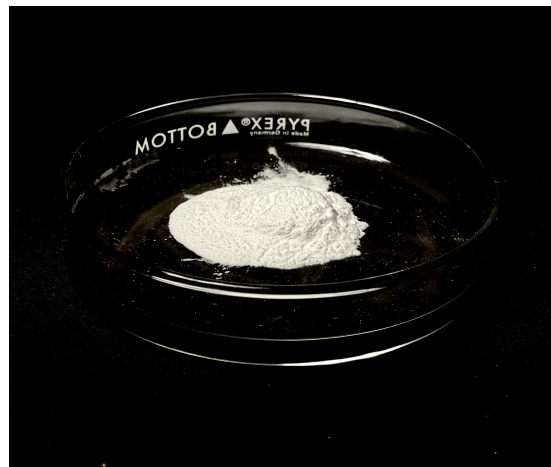
- 40 LB Sealed Pails
- 90 LB Cardboard Drum w/Liner

**Storage:** Periods of exposure to high temperatures should be minimized. Store in a cool dry area.

**Safety:** SDS available upon request

## Technical Properties

|  |              |
|--|--------------|
| <b>Appearance:</b>                     | White Powder |
| <b>Bulk Density (g/cc):</b>            | 0.7          |
| <b>Solids (%):</b>                     | 96%          |
| <b>pH:</b>                             | 4-7          |
| <b>Particle Diameter (µm):</b>         | 20-25        |
| <b>Primary Particle Size (nm)</b>      | 15-20        |
| <b>Surface Area (m<sup>2</sup>/g):</b> | 120-170      |
| <b>Color (L)</b>                       | 91           |



#### Tech-Product Manager & Sales Contact

**Mike Hopkins**  
[mhopkins@redindustrialproducts.com](mailto:mhopkins@redindustrialproducts.com)

**Mobile: (330)-461-1633 (preferred)**  
**Office: (877)-733-2281 EXT 704**

#### Customer Service/Inside Sales Contact

**Lacey Frantz**  
[lfrantz@redindustrialproducts.com](mailto:lfrantz@redindustrialproducts.com)

**Office: (877)-733-2281 EXT 702**

Serving the Concrete, Cement & Refractory Industries!